

Random tower packing



**Acid & Heat Resistance brick,
Plate and Pipe**
耐酸砖、板、管 (XXD6)



Rasching Ring
拉西环 (XXD701)



Rasching Ring
拉西环 (XXD701-1)



Cross Ring
十字环 (XXD702)



Super Intalox
异鞍环 (XXD703)



Pall Ring
鲍尔环 (XXD704)



Intalox Saddle
矩鞍环 (XXD705)



Cascade Mini Ring
阶梯环 (XXD706)



Tri-Y Ring
瓷三丫环 (XXD707)

Unstructured packing

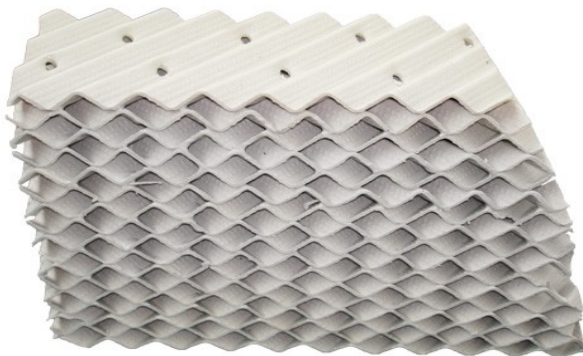


Berl saddles



Pall Rings

Structured packing



Packing Factors for Column Packings

Packing Type	Material	Nominal Packing Size, in										
		1/4	3/8	1/2	5/8	3/4	1	1 1/4	1 1/2	2	3	3 1/2
Hy-Pak	Metal						43			18		15
Super Intalox Saddles	Ceramic						60			30		
Super Intalox Saddles	Plastic						33			21		16
Pall Rings	Plastic				97		52		40	24	22	16
Pall Rings	Metal				70		48		33	20	37	16
Intalox Saddles	Ceramic	725	330	200		145	92		52	40		
Raschig Rings	Ceramic	1600	1000	580	380	255	155	125	95	65	32	
Raschig Rings	Metal, 1/32 in	700	390	300	170	155	115					
Raschig Rings	Metal, 1/16 in			410	290	220	137	110	83	57		
Berl Saddles	Ceramic	900		240		170	110		65	45		
Tellerettes	Plastic						38			19		
Mas Pac	Plastic									32		20
Quartz Rock										160		
Cross Partition	Ceramic										80	
Flexipac	Metal						33			22		16
Interlox	Metal						41			27		18
Chempak	Metal						29					

4th generation high efficiency random packing

McPac



Packing (steel)	Surface area [m ² /m ³]	Void volume
Mc-Pac Nr. 1 $d_A = 30$ mm	185	0.974
Mc-Pac Nr. 2 $d_A = 65$ mm	92	0.982
Pallring Nr. 1 $d_A = 25$ mm	223	0.953
Pallring Nr. 1,5 $d_A = 38$ mm	150	0.952
Pallring Nr. 2 $d_A = 58$ mm	108	0.970

DTNPAC



Size	D x H	Surface area [m ² /m ³]	Void volume [%]	material	Weight [kg/m ³]
1	48 x 18	135.1	92.1	PP	71.4
2	70 x 25	110.0	93.8	PP	56.4

ENVIPAC



Size	D [mm]	Surface area [m ² /m ³]	Void volume [%]	material	Weight [kg/m ³]
3/4	20	353.5	75.8	PP	224.2
1	32	123.0	94.4	PP	51.7
2	60	98.4	96.1	PP	35.4
3	80	57.0	95.5	PP	36.1

SR-PAC



Size	D x H x S [mm]	Surface area [m ² /m ³]	Void volume [%]	material	Weight [kg/m ³]
stacked	63 x 50 x 5	115.8	78.3	Vetrified clay/porcellain	478
dumped	53 x 50 x 5	105.7	80.2	Vetrified clay/porcellain	437

Liquid distributors & support

